

Vision and Mission

Vision:

The Office of Statistical Analysis and Reporting (OSAR) will be the go-to unit at NIH for data, reports, and analyses on NIH's research investments and the NIH-supported scientific workforce.

Mission:

To provide data, reports, and analyses on NIH's portfolio of research investments, in support of policy development and public accountability.

Key Functions

- Support mandatory and statutory reporting requirements for the NIH research enterprise.
- Provide analyses and reports in response to internal and external stakeholder requests.
- Conduct customer-driven descriptive and analytical research on NIH research investments.
- Provide analytical support to NIH leadership to guide management decisions and policy development.
- Develop strategic alliances to improve data quality for reporting purposes.
- Disseminate data and reports to a wide public audience through the NIH RePORT website, journals, and other media.

Some of our analysis topics include:

First-Time and Early Stage Investigator Policies
Inclusion of Women and Minorities
in NIH Clinical Research

Peer Review Enhancement Implementation
High-Risk / High Reward Research
Scientific Workforce

Grant Application Success Rates
American Recovery and Reinvestment Act

Meet Our Staff

Our staff come from a wide variety of academic disciplines, with a diverse range of analytical skills to serve your statistical and data analysis needs.

We have disciplinary training in:

- **Anthropology**
- **Biological Sciences**
- **Demography**
- **Economics**
- **Epidemiology & Public Health**
- **Information Technology**
- **Mathematics**
- **Medicine**
- **Public Policy**
- **Sociology**
- **Statistics**
- **Urban Planning**

Our analytical skills include:

- **Advanced Statistical Analysis**
- **Data Management**
- **Econometric Modeling**
- **GIS / Spatial Analysis**
- **Programming Languages**
- **Policy Analysis**
- **Program Evaluation**
- **Research Evaluation**
- **Survey Design**
- **Website Design**

Our office values continued learning and training and hosts events for the NIH community to keep abreast of cutting edge analytic techniques.



Robin M. Wagner, PhD, MS
Director
Office: 301-443-5234
Cell: 301-219-9788
Robin.Wagner@nih.gov

Dr. Robin Wagner has worked in the environmental health and injury fields for over 25 years in government, university and non-profit settings. She joined NIH in 2008 after 12 years at the Centers for Disease Control and Prevention. She has a Ph.D. in Epidemiology from Johns Hopkins University, a M.S. in Technology and Policy from MIT, and a B.S. in Neuroscience and Behavior from Brown University.

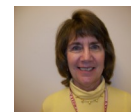


Katrina Pearson
Assistant Director
Office: 301.435.2709
Cell: 301-332-9063
Katrina.Pearson@nih.gov

Katrina Pearson joined the Office of Extramural Research in 1998, after working at the NIH's National Institute of Neurological Disorders and Strokes, Scientific Review Branch, for two years and now serves as Assistant Chief and Senior Analyst in the Reporting Branch, with an extensive background in information retrieval, data manipulation and analysis, program leadership and development and information system management.



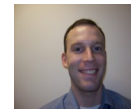
Rediet Berhane, MUPDD | Senior Data Analyst
Areas of Expertise: SQL-SAS programming, GIS, Land use planning, Community development, Urban design
Rediet.Berhane@nih.gov | 301-435-8045



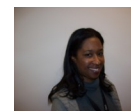
Carol Bleakley | Program Analyst
Areas of Expertise: End of year reports for the Office of Budget, Surveys for NSF and NIH ad hoc reports
Carol.Bleakley@nih.gov | 301-435-2702



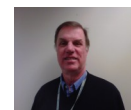
Katherine Catevenis | Mathematical Statistician
Areas of Expertise: Biostatistics, Mathematics, SAS Programming
Katherine.Catevenis@nih.gov | 301-443-8323



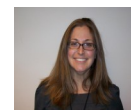
Matthew Eblen, MPA | Mathematical Statistician
Areas of Expertise: Statistics, International economics, Mathematics
Matthew.Eblen@nih.gov | 301-435-0648



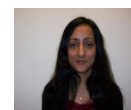
Natalie Graham, MS | Information Management Specialist
Areas of Expertise: Indexing, Coding and classification of scientific research, Request and reports management
Natalie.Graham@nih.gov | 301-435-0644



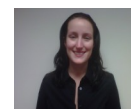
Robert Moore | Senior Program Analyst
Areas of Expertise: NIH policy history, Data analysis, SQL-SAS programming
Robert.Moore@nih.gov | 301-435-2696



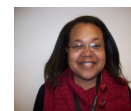
Lindsay Pool, MPH | Health Scientist
Areas of Expertise: Epidemiology, SAS programming, Geographic information systems, Survey design
Lindsay.Pool@nih.gov | 301-594-0424



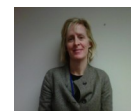
Deepshikha Roychowdhury, PhD | Senior Data Analyst
Areas of Expertise: Statistical data analysis, Econometric modeling techniques, Policy evaluation, SAS, SQL
Deepshikha.Roychowdhury@nih.gov | 301-435-0653



Sam Ryan, MPP | Presidential Management Fellow
Areas of Expertise: Statistical data analysis, Mathematics, Policy Analysis
Lindsey.Ryan@nih.gov | 301-443-8326



Cassandra Spears | Information Technology Specialist
Areas of Expertise: SQL programming, Oracle PL/SQL Developer software
Cassandra.Spears@nih.gov | 301-435-2701



Lindsey Scott, PhD | Health Scientist
Areas of Expertise: Biochemistry, Nutrition, Neuroscience, Behavior, Data analysis
Lindsey.Scott@nih.gov | 301-402-3652

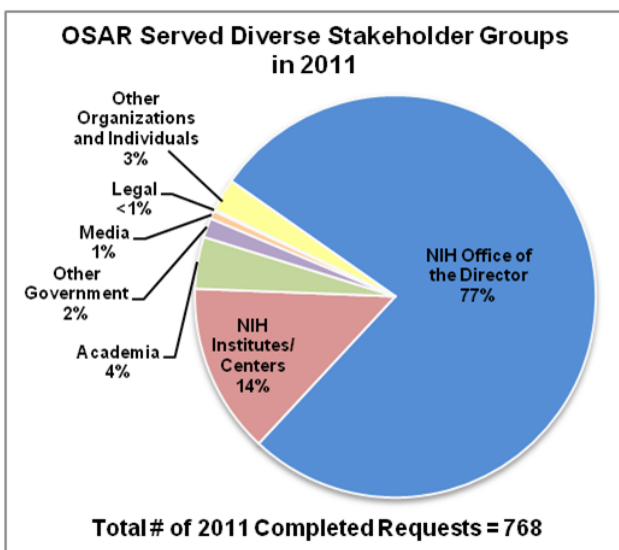


Charles Wu, MPH | Health Science Data Analyst
Areas of Expertise: SAS-SQL programming, Epidemiology, MS Access, Statistics, HTML/JavaScript
Charles.Wu@nih.gov | 301-435-2691

Customer Service

The Office of Statistical Analysis and Reporting is under the Division of Information Services in the Office of Extramural Research, part of NIH's Office of the Director.

We serve a wide range of stakeholders, and would be happy to add you to the list of valued customers! The majority of our requestors are NIH-internal, but we do serve customers from other government agencies, academia, Congress, the media, industry, non-profits, and private citizens.



The Office of Statistical Analysis and Reporting is committed to providing our customers with products that are both timely and thorough. We use a workflow management system to ensure reliability.

- Our standard turn-around time is 8 business days, but we can accommodate rush deadlines.
- Half of all requests are completed ahead of schedule; the median completion time is one day earlier than the due date.



Office of Statistical Analysis and Reporting
Office of Research Information Systems
Office of Extramural Research
Office of the Director
National Institutes of Health

Contact Information:
6705 Rockledge Drive
Suite 4090
Bethesda, MD 20892
Tel: 301-435-4698
Fax: 301-480-2845

Send Your Information Requests to:
DISHelp@mail.nih.gov

Many of our analyses are on the web:
<http://report.nih.gov>



Office of Statistical Analysis and Reporting (OSAR)

National
Institutes
of Health



Office of
Extramural Research
National Institutes of Health